

Coale® Brass SAE 45° Flared Tube Fittings may be used with copper, brass, aluminum, steel and plastic tube provided an acceptable flare can be generated with the material. Vacuum to pressures of 346 Bar (5,000 Psi) can be handled dependent upon size, material and conditions. Using a 4 : 1 Safety Factor the following general rule is used :

- **210 Bar** for 1/8", 3/16", 1/4", 5/16" (R410a, R32), and 1/2" (R410a, R32) Female SAE Flare;
- **140 Bar** for 5/16", 3/8", 7/16", 1/2", 5/8" (R410a, R32), and 3/4" (R410a, R32) Female SAE Flare;
- **105 Bar** for 5/8", 3/4", 7/8", and 1" Female SAE Flare.

Long nuts are recommended when vibration is a factor. Tubing should be double flared in extreme applications to minimize flare thinning on over-tightening.

Excellent pull out-make and break-good vibration resistance (improved by using long or strong nuts) low cost easy assembly and wide selection are features of this style fitting.

Fittings listed generally comply with SAE, ASA, ACME, ASME, MS, EN378-2, 97/23/CE, 2002/95/EC Standard. However when design makes dimensions critical please contact us for samples and/or prints for testing and evaluation. Tube size listed are O.D. (Outside Diameter). To determine nominal (water tube) size, subtract 1/8" (i.e. 5/8" O.D. Outside Diameter = 1/2" nominal). Pipe sizes listed are standard nominal pipe size and threads are to DTPS Dryseal Taper Pipe Standards.

Coale will provide flare fitting to SAE Standard J513 whenever possible. In some cases, slight deviations will occur when full compliance fittings are not available.

### ASSEMBLY INSTRUCTIONS

1. Cut tube square and remove cutoff burr;
2. Slide nut on tube, threaded end facing end of tube;
3. Flare tube following flaring tool manufacturers instructions (check flare quality);
4. Thread nut on to fitting body "handtight";
5. With proper wrench tighten to a solid feel.

### TORQUE (Lbs./ft. - N·m) for SAE Flare Fittings

1/4" = 8,0 ÷ 10,0 Lbs./ft. - 10,88 ÷ 13,60 N·m  
 3/8" = 15,0 ÷ 25,0 Lbs./ft. - 20,40 ÷ 34,00 N·m  
 1/2" = 25,0 ÷ 35,0 Lbs./ft. - 34,00 ÷ 47,60 N·m  
 5/8" = 40,0 ÷ 55,0 Lbs./ft. - 54,40 ÷ 74,80 N·m

**CAUTION :** Over-tightening and dirt can damage fittings and/or tube causing leaks. Special adjustable Torque Wrench Model TW 46810 permit tightening to the exact torque required for best performance, economy and safety.

**NOTE :** Lubrication of flare faces and threads is recommended when practical (use NYLOG Model RT201B).

THREAD SIZE of TUBE ENDS (O.D. Outside Diameter - SAE Flare / UNF)				
Ø 1/8"	Ø 3/16"	Ø 1/4"	Ø 5/16"	Ø 3/8"
5/16" - 24	3/8" - 24	7/16" - 20	1/2" - 20	5/8" - 18
Ø 7/16"	Ø 1/2"	Ø 5/8"	Ø 3/4"	Ø 7/8"
11/16" - 16	3/4" - 16	7/8" - 14	1-1/16" - 14	1-1/4" - 12

### REAL DIMENSIONS - Page Format A4 210 x 297 mm. (h)



1/4" M. SAE  
(7/16" 20UNF)  
1,27 mm.



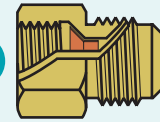
5/16" M. SAE  
(1/2" 20UNF)  
1,27 mm.



3/8" M. SAE  
(5/8" 18UNF)  
1,41 mm.



1/2" M. SAE  
(3/4" 16UNF)  
1,59 mm.



Heavy duty tube fittings generally conform to ARI, SAE, EN378-2, 97/23/CE, 2002/95/EC Standards for AC&R Air Conditioning and Refrigeration Service. Long dryseal pipe threads minimize leakage and provide more clearance for tightening flare nuts. Shapes, elbows, tees... are made from brass forgings to maximize strength and eliminate cracks. Long Tan Copper Gaskets (B3 Series) furnished with all Female SAE Flares.

### CROSS - (4) Male SAE Flare



C1- 4

Model	Description
C1- 4	Cross (4) x 1/4" Male SAE Flare.
C1- 6	(4) x 3/8" Male SAE Flare.

### Male SAE Flare x Male NPT National Pipe Thread ELL



E1- 4A

Model	Description
E1- 4A	Ell 1/4" Male SAE Flare x 1/8" Male NPT Thread.
E1- 4B	1/4" (7/16" 20UNF) M. SAE x 1/4" M. NPT.
E1- 4C	1/4" (7/16" 20UNF) M. SAE x 3/8" M. NPT.
E1- 5A	5/16" ( 1/2" 20UNF) M. SAE x 1/8" M. NPT.
E1- 5B	5/16" ( 1/2" 20UNF) M. SAE x 1/4" M. NPT.
E1- 6A	3/8" ( 5/8" 18UNF) M. SAE x 1/8" M. NPT.
E1- 6B	3/8" ( 5/8" 18UNF) M. SAE x 1/4" M. NPT.
E1- 6C	3/8" ( 5/8" 18UNF) M. SAE x 3/8" M. NPT.
E1- 6D	3/8" ( 5/8" 18UNF) M. SAE x 1/2" M. NPT.
E1- 8B	1/2" ( 3/4" 16UNF) M. SAE x 1/4" M. NPT.
E1- 8C	1/2" ( 3/4" 16UNF) M. SAE x 3/8" M. NPT.
E1- 8D	1/2" ( 3/4" 16UNF) M. SAE x 1/2" M. NPT.
E1- 8E	1/2" ( 3/4" 16UNF) M. SAE x 3/4" M. NPT.
E1-10C	5/8" ( 7/8" 14UNF) M. SAE x 3/8" M. NPT.

# Components

## SAE 45° - BRASS FLARED TUBE FITTINGS



E1-10D	5/8" ( 7/8" 14UNF) M. SAE x 1/2" M. NPT.
E1-10E	5/8" ( 7/8" 14UNF) M. SAE x 3/4" M. NPT.
E1-12D	3/4" (1-1/16" 14UNF) M. SAE x 1/2" M. NPT.
E1-12E	3/4" (1-1/16" 14UNF) M. SAE x 3/4" M. NPT.

### Male SAE Flare x Male SAE Flare ELL



E2- 4

Model	Description
E2- 4	Flare Ell 1/4" Male SAE Flare x 1/4" Male SAE Flare.
E2- 5	(2) 5/16" (1/2" 20UNF) M. SAE.
E2- 6	(2) 3/8" (5/8" 18UNF) M. SAE.
E2- 8	(2) 1/2" (3/4" 16UNF) M. SAE.
E2-10	(2) 5/8" (7/8" 14UNF) M. SAE.
E2-12	(2) 3/4" (1-1/16" 14UNF) M. SAE.
ER2- 6 4	Reducing Flare Ell 3/8" (5/8" 18UNF) Male SAE flare x 1/4" (7/16" 20UNF) Male SAE flare.
ER2- 8 4	1/2" (3/4" 16UNF) M. SAE x 1/4" (7/16" 20UNF) M. SAE
ER2- 8 6	1/2" (3/4" 16UNF) M. SAE x 3/8" (5/8" 18UNF) M. SAE.
ER2-10 6	5/8" (7/8" 14UNF) M. SAE x 3/8" (5/8" 18UNF) M. SAE.
ER2-10 8	5/8" (7/8" 14UNF) M. SAE x 1/2" (3/4" 16UNF) M. SAE.
ER2-1210	3/4" (1-1/16" 14UNF) M. SAE x 5/8" (7/8" 14UNF) M. SAE

### Male SAE Flare x ODS Solder - ELL



ES2- 4 4

Model	Description
ES2- 4 4	Ell 1/4" (7/16" 20UNF) M. SAE Flare x 1/4" ODS solder.
ES2- 6 6	3/8" (5/8" 18UNF) M. SAE x 3/8" ( 9,52 mm.) ODS.
ES2- 6 8	3/8" (5/8" 18UNF) M. SAE x 1/2" (12,70 mm.) ODS.
ES2- 8 8	1/2" (3/4" 16UNF) M. SAE x 1/2" (12,70 mm.) ODS.
ES2-1010	5/8" (7/8" 14UNF) M. SAE x 5/8" (15,88 mm.) ODS.

### Male SAE Flare x Female NPT National Pipe Thread ELL



E3- 4A

Model	Description
E3- 4A	Ell 1/4" Male SAE Flare x 1/8" Female NPT N. Pipe Thread
E3- 4B	1/4" (7/16" 20UNF) M. SAE x 1/4" F. NPT.

E3- 4C	1/4" (7/16" 20UNF) M. SAE x 3/8" F. NPT.
E3- 5B	5/16" ( 1/2" 20UNF) M. SAE x 1/4" F. NPT.
E3- 6A	3/8" ( 5/8" 18UNF) M. SAE x 1/8" F. NPT.
E3- 6B	3/8" ( 5/8" 18UNF) M. SAE x 1/4" F. NPT.
E3- 6C	3/8" ( 5/8" 18UNF) M. SAE x 3/8" F. NPT.
E3- 6D	3/8" ( 5/8" 18UNF) M. SAE x 1/2" F. NPT.
E3- 8C	1/2" ( 3/4" 16UNF) M. SAE x 3/8" F. NPT.
E3- 8D	1/2" ( 3/4" 16UNF) M. SAE x 1/2" F. NPT.
E3- 8E	1/2" ( 3/4" 16UNF) M. SAE x 3/4" F. NPT.
E3-10D	5/8" ( 7/8" 14UNF) M. SAE x 1/2" F. NPT.
E3-10E	5/8" ( 7/8" 14UNF) M. SAE x 3/4" F. NPT.

### Male SAE Flare x Female SAE Flare Swivel Nut - ELL



ES4- 4 4

Model	Description
ES4- 4 4	Ell 1/4" Male SAE Flare x 1/4" Female SAE Flare swivel Nut with Long Tan Copper Gasket. R410a, R32.
ES4- 6 6	3/8" M. SAE x 3/8" F. SAE. R-410a, R-32.
ES4- 8 8	1/2" M. SAE x 1/2" F. SAE. R-410a, R-32.
ES4-1010	5/8" M. SAE x 5/8" F. SAE. R-410a, R-32.
ES4-1212	3/4" M. SAE x 3/4" F. SAE. R-410a, R-32.

### Spare Parts

B3- 4	Long Tan Copper Gasket for 1/4" Female SAE Flare.
B3- 5	5/16" F. SAE.
B3- 6	3/8" F. SAE.
B3- 8	1/2" F. SAE.
B3-10	5/8" F. SAE.
B3-12	3/4" F. SAE.

### Male SAE Flare x Female SAE Flare Swivel Nut - REDUCING ELL



ERS4- 6 4 410a

Model	Description
ERS4- 5 4	Reducing Ell 5/16" (1/2" 20UNF) Male SAE Flare x 1/4" (7/16" 20UNF) Female SAE Flare Swivel Nut with Long Tan Copper Gasket. R410a, R32.
ERS4- 6 4	3/8" M. SAE x 1/4" F. SAE w/LTCG. R410a, R32.
ERS4- 6 5	3/8" M. SAE x 5/16" F. SAE w/LTCG. R410a, R32.
ERS4- 8 6	1/2" M. SAE x 3/8" F. SAE w/LTCG. R410a, R32.
ERS4-10 8	5/8" M. SAE x 1/2" F. SAE w/LTCG. R410a, R32.

### Male SAE Flare x Male Pipe Thread NPT 45° ELL



E5- 4A

Model	Description
E5- 4A	45° Ell 1/4" Male SAE Flare x 1/8" Male Pipe Thread NPT.
E5- 4B	1/4" M. SAE x 1/4" M. NPT.
E5- 5A	5/16" M. SAE x 1/8" M. NPT.
E5- 5B	5/16" M. SAE x 1/4" M. NPT.
E5- 6B	3/8" M. SAE x 1/4" M. NPT.
E5- 6C	3/8" M. SAE x 3/8" M. NPT.
E5- 8B	1/2" M. SAE x 1/4" M. NPT.
E5- 8C	1/2" M. SAE x 3/8" M. NPT.
E5- 8D	1/2" M. SAE x 1/2" M. NPT.
E5-10C	5/8" M. SAE x 3/8" M. NPT.
E5-10D	5/8" M. SAE x 1/2" M. NPT.
E5-12D	3/4" M. SAE x 3/4" M. NPT.

### Female SAE Flare - LONG REFRIGERATION NUTS

Increasing Vibration Resistance.

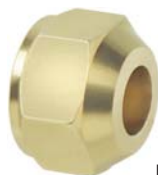


N4- 5

Model	Description
N4- 4	Long Nut 1/4" (7/16" 20UNF) F. SAE Flare x 1/4" O.D.
N4- 5	5/16" (1/2" 20UNF) F. SAE x 5/16" ( 8 mm.) O.D. R410a, R-32.
N4- 6	3/8" ( 5/8" 18UNF) F. SAE x 3/8" O.D.
N4- 8	1/2" ( 3/4" 16UNF) F. SAE x 1/2" O.D.
N4-10	5/8" ( 7/8" 14UNF) F. SAE x 5/8" O.D.
N4-12	3/4" (1-1/16" 14UNF) F. SAE x 3/4" O.D.
N4-14	7/8" ( 1-1/4" 12UNF) F. SAE x 7/8" O.D.

### Female SAE Flare - STANDARD and STRONG NUTS

Standard Nut for R-22, R-134a, R-404a, R-407f, R-507... or Strong for R-410a, R-32 refrigerants.



NS4- 8 410a

Model	Description
NS4- 4	Strong Nut 1/4" (7/16" 20UNF) F. SAE x 1/4" O.D.
NS4- 5	5/16" (1/2" 20UNF) F. SAE x 5/16" (8 mm.) O.D.
NS4- 6	3/8" (5/8" 18UNF) F. SAE x 3/8" O.D.
NS4- 8 407f	1/2" (3/4" 16UNF) F. SAE x 1/2" O.D.

NS4- 8	1/2" (3/4" 16UNF) F. SAE x 1/2" OD. R410a, R32.
NS4-10 407f	5/8" (7/8" 14UNF) F. SAE x 5/8" OD.
NS4-10	5/8" (7/8" 14UNF) F. SAE x 5/8" OD. R410a, R32.
NS4-12	3/4" (1-1/16" 14UNF) F. SAE x 3/4" OD.
NS4-14	7/8" ( 1-1/4" 12UNF) F. SAE x 7/8" OD.
NS4- 4 6MM	Metric 1/4" (7/16" 20UNF) F. SAE x 6 mm. OD.
NS4- 610MM	3/8" (5/8" 18UNF) F. SAE x 10 mm. OD.
NS4- 812MM	1/2" (3/4" 16UNF) F. SAE x 12 mm. OD.
NS4-1016MM	5/8" (7/8" 14UNF) F. SAE x 16 mm. OD.

### Female SAE Flare - REDUCING NUTS



NRS4-10 8

Model	Description
NRS4- 5 4	Reducing Nut 5/16" (1/2" 20UNF) Female SAE Flare x 1/4" (6,35 mm.) OD tubing. R410a, R32.
NRS4- 6 4	3/8" (5/8" 18UNF) F. SAE x 1/4" OD. R410a, R32.
NRS4- 6 5	3/8" F. SAE x 5/16" ( 8 mm.) OD. R410a, R32.
NRS4- 8 6 407f	1/2" (3/4" 16UNF) F. SAE x 3/8" ( 9,52 mm.) OD.
NRS4- 8 6	1/2" F. SAE x 3/8" ( 9,52 mm.) OD. R410a, R32.
NRS4-10 8 407f	5/8" (7/8" 14UNF) F. SAE x 1/2" (12,70 mm.) OD.
NRS4-10 8	5/8" F. SAE x 1/2" OD. R410a, R32.
NRS4-1210 407f	3/4" F. SAE x 5/8" (15,88 mm.) OD.
NRS4- 5 6MM	5/16" ( 1/2" 20UNF) F. SAE x 6 mm. OD.
NRS4- 810MM	1/2" ( 3/4" 16UNF) F. SAE x 10 mm. OD.
NRS4-1012MM	5/8" ( 7/8" 14UNF) F. SAE x 12 mm. OD.
NRS4-1216MM	3/4" (1-1/16" 14UNF) F. SAE x 16 mm. OD.

### Female SAE Flare - FROST PROOF REFRIGERATION NUTS

Holes relieve frost in threaded area.



NST4- 6

Model	Description
NST4- 4	Frost proof Refrigeration nut 1/4" (7/16" 20UNF) Female SAE Flare x 1/4" (6,35 mm.) OD.
NST4- 5	5/16" (1/2" 20UNF) F. SAE x 5/16" ( 8,00 mm.) OD.
NST4- 6	3/8" (5/8" 18UNF) F. SAE x 3/8" ( 9,52 mm.) OD.
NST4- 8	1/2" (3/4" 16UNF) F. SAE x 1/2" (12,70 mm.) OD.
NST4-10	5/8" (7/8" 14UNF) F. SAE x 5/8" (15,88 mm.) OD.
NST4- 4 6MM	1/4" (7/16" 20UNF) F. SAE x 6 mm. OD.
NST4- 610MM	3/8" ( 5/8" 18UNF) F. SAE x 10 mm. OD.

# Components

## SAE 45° - BRASS FLARED TUBE FITTINGS



NST4- 812MM	1/2" (3/4" 16UNF) F. SAE x 12 mm. OD.
NST4-1016MM	5/8" (7/8" 14UNF) F. SAE x 16 mm. OD.

### Female SAE Flare with Long Tan Copper Gasket - CAPS



N5- 5

Model	Description
N5- 4	Hex Cap 1/4" Female SAE with Long Tan Copper Gasket.
N5- 5	5/16" ( 1/2" 20UNF) F. SAE. R410a, R32.
N5- 6	3/8" ( 5/8" 18UNF) F. SAE.
N5- 8	1/2" ( 3/4" 16UNF) F. SAE.
N5-10	5/8" ( 7/8" 14UNF) F. SAE.
N5-12	3/4" (1-1/16" 14UNF) F. SAE.

### Female SAE Flare w/Long Tan Copper Gasket - CAPS with PLATIC RETAINER STRAP



N5- 5PR

Model	Description
N5- 4PB	Brass Hex Seal Cap 1/4" (7/16" 20UNF) Female SAE with Long Tan Copper Gasket & Plastic Retainer Strap - Bleu (Low Pressure).
N5- 4PR	1/4" (7/16" 20UNF) F. SAE - Red (High Pressure).
N5- 4PN	1/4" (7/16" 20UNF) F. SAE - Neutral.
N5- 5PB	5/16" (1/2" 20UNF) F. SAE for R410a, R32 - Bleu (LP)
N5- 5PR	5/16" (1/2" 20UNF) F. SAE for R410a, R32 - Red (HP).
N5- 5PN	5/16" (1/2" 20UNF) F. SAE for R410a, R32 - Neutral.
N5-5LHPB	5/16" (1/2" 20UNF) F. SAE LH Left Hand R32 - Bleu.
N5-5LHPR	5/16" (1/2" 20UNF) F. SAE LH Left Hand R32 - Red.
N5-5LHPN	5/16" (1/2" 20UNF) F. SAE LH Left Hand R32 Neutral
N5- 6PB	3/8" (5/8" 18UNF) F. SAE - Bleu.
N5- 6PR	3/8" (5/8" 18UNF) F. SAE - Red.
N5- 6PN	3/8" (5/8" 18UNF) F. SAE - Neutral.

### Male SAE Flare - PLUGS

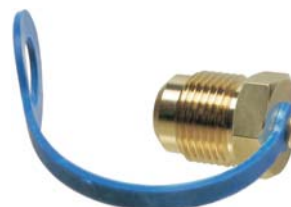


P2- 5

Model	Description
P2- 4	Plug 1/4" (7/16" 20UNF) Male SAE Flare.

P2- 5	5/16" ( 1/2" 20UNF) M. SAE.
P2- 6	3/8" ( 5/8" 18UNF) M. SAE.
P2- 8	1/2" ( 3/4" 16UNF) M. SAE.
P2-10	5/8" ( 7/8" 14UNF) M. SAE.
P2-12	3/4" (1-1/16" 14UNF) M. SAE.
P2-14	7/8" ( 1-1/4" 12UNF) M. SAE.

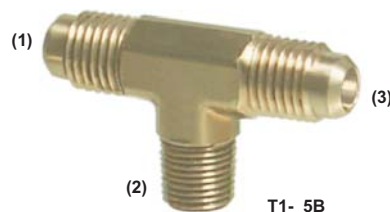
### Male SAE Flare - PLUGS w/PLASTIC RETAINER STRAP



P2- 5PB

Model	Description
P2- 4PB	Hex Plug 1/4" (7/16" 20UNF) Male SAE with Plastic Retainer Strap - Bleu (Low Pressure).
P2- 4PR	1/4" (7/16" 20UNF) F. SAE - Red (High Pressure).
P2- 4PN	1/4" (7/16" 20UNF) F. SAE - Neutral.
P2- 5PB	5/16" ( 1/2" 20UNF) F. SAE - Bleu.
P2- 5PR	5/16" ( 1/2" 20UNF) F. SAE - Red.
P2- 5PN	5/16" ( 1/2" 20UNF) F. SAE - Neutral.
P2- 6PB	3/8" ( 5/8" 18UNF) F. SAE - Bleu.
P2- 6PR	3/8" ( 5/8" 18UNF) F. SAE - Red.
P2- 6PN	3/8" ( 5/8" 18UNF) F. SAE - Neutral.

### Male SAE Flare x Male Pipe Thread NPT x Male SAE Flare TEE

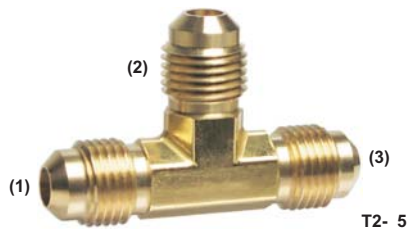


T1- 5B

Model	Description
T1- 4A	TEE (1) 1/4" (7/16" 20UNF) Male SAE Flare x (2) 1/8" Male NPT x (3) 1/4" (7/16" 20UNF) Male SAE Flare.
T1- 4B	1/4" M. SAE x 1/4" M. NPT x 1/4" M. SAE.
T1- 4C	1/4" M. SAE x 3/8" M. NPT x 1/4" M. SAE.
T1- 5A	5/16" M. SAE x 1/8" M. NPT x 5/16" M. SAE.
T1- 5B	5/16" M. SAE x 1/4" M. NPT x 5/16" M. SAE.
T1- 6B	3/8" M. SAE x 1/4" M. NPT x 3/8" M. SAE.
T1- 6C	3/8" M. SAE x 3/8" M. NPT x 3/8" M. SAE.
T1- 6D	3/8" M. SAE x 1/2" M. NPT x 3/8" M. SAE.
T1- 8B	1/2" M. SAE x 1/4" M. NPT x 1/2" M. SAE.
T1- 8C	1/2" M. SAE x 3/8" M. NPT x 1/2" M. SAE.
T1- 8D	1/2" M. SAE x 1/2" M. NPT x 1/2" M. SAE.
T1-10C	5/8" M. SAE x 3/8" M. NPT x 5/8" M. SAE.
T1-10D	5/8" M. SAE x 1/2" M. NPT x 5/8" M. SAE.
T1-12D	3/4" M. SAE x 1/2" M. NPT x 3/4" M. SAE.

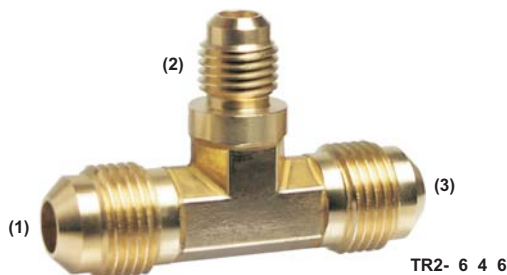


### Male SAE Flare x Male SAE Flare x Male SAE Flare TEE



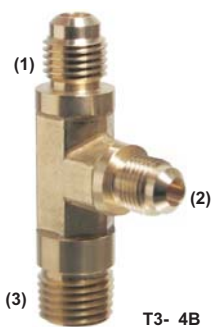
Model	Description
T2- 4	TEE (1) 1/4" Male SAE Flare x (2) 1/4" Male SAE Flare x (3) 1/4" Male SAE Flare.
T2- 5	5/16" M. SAE x 5/16" M. SAE x 5/16" M. SAE.
T2- 6	3/8" M. SAE x 3/8" M. SAE x 3/8" M. SAE.
T2- 8	1/2" M. SAE x 1/2" M. SAE x 1/2" M. SAE.
T2-10	5/8" M. SAE x 5/8" M. SAE x 5/8" M. SAE.
T2-12	3/4" M. SAE x 3/4" M. SAE x 3/4" M. SAE.

### (3) Male SAE Flare - REDUCING TEE



Model	Description
TR2- 4 5 4	Reducing TEE (1) (3) 1/4" x (2) 5/16 Male SAE Flare.
TR2- 5 4 5	(1) (3) 5/16" M. SAE x (2) 1/4" M. SAE.
TR2- 6 4 6	(1) (3) 3/8" M. SAE x (2) 1/4" M. SAE.
TR2- 6 5 6	(1) (3) 3/8" M. SAE x (2) 5/16" M. SAE.
TR2- 6 8 6	(1) (3) 3/8" M. SAE x (2) 1/2" M. SAE.
TR2- 8 4 8	(1) (3) 1/2" M. SAE x (2) 1/4" M. SAE.
TR2- 8 6 8	(1) (3) 1/2" M. SAE x (2) 3/8" M. SAE.
TR2- 810 8	(1) (3) 1/2" M. SAE x (2) 5/8" M. SAE.
TR2-10 810	(1) (3) 5/8" M. SAE x (2) 1/2" M. SAE.

### (2) Male SAE Flare x Male NPT Pipe Thread TEE



Model	Description
T3- 4A	TEE (1) 1/4" Male SAE Flare x (2) 1/4" Male SAE Flare x (3) 1/8" Male NPT Pipe Thread.

T3- 4B	1/4" M. SAE x 1/4" M. SAE x 1/4" M. NPT.
T3- 5A	5/16" M. SAE x 5/16" M. SAE x 1/8" M. NPT.
T3- 5B	5/16" M. SAE x 5/16" M. SAE x 1/4" M. NPT.
T3- 6B	3/8" M. SAE x 3/8" M. SAE x 1/4" M. NPT.
T3- 6C	3/8" M. SAE x 3/8" M. SAE x 3/8" M. NPT.
T3- 8C	1/2" M. SAE x 1/2" M. SAE x 3/8" M. NPT.
T3- 8D	1/2" M. SAE x 1/2" M. SAE x 1/2" M. NPT.
T3-10D	5/8" M. SAE x 5/8" M. SAE x 1/2" M. NPT.
T3-12D	3/4" M. SAE x 3/4" M. SAE x 1/2" M. NPT.
T3-12E	3/4" M. SAE x 3/4" M. SAE x 3/4" M. NPT.
TR3- 4 5A	Reducing (1) 1/4" x (2) 5/16" M. SAE x 1/8" M. NPT.
TR3- 4 6A	(1) 1/4" x (2) 3/8" M. SAE x 1/8" M. NPT.
TR3- 5 4A	(1) 5/16" x (2) 1/4" M. SAE x 1/8" M. NPT.
TR3- 5 6A	(1) 5/16" x (2) 3/8" M. SAE x 1/8" M. NPT.
TR3- 6 4A	(1) 3/8" x (2) 1/4" M. SAE x 1/8" M. NPT.
TR3- 6 5A	(1) 3/8" x (2) 5/16" M. SAE x 1/8" M. NPT.
TR3- 4 5B	(1) 1/4" x (2) 3/8" M. SAE x 1/4" M. NPT.
TR3- 4 6B	(1) 1/4" x (2) 3/8" M. SAE x 1/4" M. NPT.
TR3- 5 4B	(1) 5/16" x (2) 1/4" M. SAE x 1/4" M. NPT.
TR3- 5 6B	(1) 5/16" x (2) 3/8" M. SAE x 1/4" M. NPT.
TR3- 6 4B	(1) 3/8" x (2) 1/4" M. SAE x 1/4" M. NPT.
TR3- 6 5B	(1) 3/8" x (2) 5/16" M. SAE x 1/4" M. NPT.

### Male SAE Flare x Female SAE Flare x Male SAE - TEE



Model	Description
T6- 4	TEE (2) 1/4" Male SAE Flare x 1/4" Female SAE Flare with Long Tan Copper Gasket. R-410a, R32.

### Male SAE Flare x Male NPT Pipe Thread - UNION



Model	Description
U1- 4A	1/4" (7/16" 20UNF) M. SAE x 1/8" M. NPT.
U1- 4B	1/4" (7/16" 20UNF) M. SAE x 1/4" M. NPT.
U1- 4C	1/4" (7/16" 20UNF) M. SAE x 3/8" M. NPT.
U1- 4D	1/4" (7/16" 20UNF) M. SAE x 1/2" M. NPT.
U1- 5A	5/16" ( 1/2" 20UNF) M. SAE x 1/8" M. NPT.
U1- 5B	5/16" ( 1/2" 20UNF) M. SAE x 1/4" M. NPT.
U1- 5C	5/16" ( 1/2" 20UNF) M. SAE x 3/8" M. NPT.
U1- 6A	3/8" ( 5/8" 18UNF) M. SAE x 1/8" M. NPT.
U1- 6B	3/8" ( 5/8" 18UNF) M. SAE x 1/4" M. NPT.

# Components

## SAE 45° - BRASS FLARED TUBE FITTINGS



U1- 6C	3/8" Male SAE Flare x 3/8" Male NPT Pipe Thread.
U1- 6D	3/8" M. SAE x 1/2" M. NPT.
U1- 6E	3/8" M. SAE x 3/4" M. NPT.
U1- 8A	1/2" M. SAE x 1/8" M. NPT.
U1- 8B	1/2" M. SAE x 1/4" M. NPT.
U1- 8C	1/2" M. SAE x 3/8" M. NPT.
U1- 8D	1/2" M. SAE x 1/2" M. NPT.
U1- 8E	1/2" M. SAE x 3/4" M. NPT.
U1-10B	5/8" M. SAE x 1/4" M. NPT.
U1-10C	5/8" M. SAE x 3/8" M. NPT.
U1-10D	5/8" M. SAE x 1/2" M. NPT.
U1-10E	5/8" M. SAE x 3/4" M. NPT.
U1-12C	3/4" M. SAE x 3/8" M. NPT.
U1-12D	3/4" M. SAE x 1/2" M. NPT.
U1-12E	3/4" M. SAE x 3/4" M. NPT.
U1-14E	7/8" M. SAE x 3/4" M. NPT.

### Male SAE Flare x Male SAE Flare UNION



U2- 5

Model	Description
U2- 4	Union 1/4" Male SAE Flare x 1/4" Male SAE Flare.
U2- 5	(2) 5/16" ( 1/2" 20UNF) M. SAE.
U2- 6	(2) 3/8" ( 5/8" 18UNF) M. SAE.
U2- 8	(2) 1/2" ( 3/4" 16UNF) M. SAE.
U2-10	(2) 5/8" ( 7/8" 14UNF) M. SAE.
U2-12	(2) 3/4" (1-1/16" 14UNF) M. SAE.
U2-14	(2) 7/8" ( 1-1/4" 12UNF) M. SAE.

### Male SAE Flare x Male SAE Flare REDUCING UNION



UR2- 6 4

Model	Description
UR2- 5 4	Reducing 5/16" Male SAE Flare x 1/4" Male SAE Flare.
UR2- 6 4	3/8" M. SAE x 1/4" M. SAE.
UR2- 6 5	3/8" M. SAE x 5/16" M. SAE.
UR2- 8 4	1/2" M. SAE x 1/4" M. SAE.
UR2- 8 5	1/2" M. SAE x 5/16" M. SAE.
UR2- 8 6	1/2" M. SAE x 3/8" M. SAE.
UR2-10 5	5/8" M. SAE x 5/16" M. SAE.
UR2-10 6	5/8" M. SAE x 3/8" M. SAE.
UR2-10 8	5/8" M. SAE x 1/2" M. SAE.
UR2-12 8	3/4" M. SAE x 1/2" M. SAE.
UR2-1210	3/4" M. SAE x 5/8" M. SAE.

### Male SAE Flare x Female Pipe Thread F. NPT ADAPTER



U3- 5A

Model	Description
U3- 4A	Adapter 1/4" Male SAE Flare x 1/8" Female Pipe Thread
U3- 4A	1/4" M. SAE x 1/8" F. NPT.
U3- 4B	1/4" M. SAE x 1/4" F. NPT.
U3- 4C	1/4" M. SAE x 3/8" F. NPT.
U3- 4D	1/4" M. SAE x 1/2" F. NPT.
U3- 51	5/16" M. SAE x 1/16" F. NPT.
U3- 5A	5/16" M. SAE x 1/8" F. NPT.
U3- 5B	5/16" M. SAE x 1/4" F. NPT.
U3- 5C	5/16" M. SAE x 3/8" F. NPT.
U3- 6A	3/8" M. SAE x 1/8" F. NPT.
U3- 6B	3/8" M. SAE x 1/4" F. NPT.
U3- 6C	3/8" M. SAE x 3/8" F. NPT.
U3- 6D	3/8" M. SAE x 1/2" F. NPT.
U3- 6E	3/8" M. SAE x 3/4" F. NPT.
U3- 8B	1/2" M. SAE x 1/4" F. NPT.
U3- 8C	1/2" M. SAE x 3/8" F. NPT.
U3- 8D	1/2" M. SAE x 1/2" F. NPT.
U3- 8E	1/2" M. SAE x 3/4" F. NPT.
U3-10C	5/8" M. SAE x 3/8" F. NPT.
U3-10D	5/8" M. SAE x 1/2" F. NPT.

### Female SAE Flare w/Gasket x Male SAE Flare ADAPTER



UR3- 5 4

Model	Description
UR3- 4 5	1/4" F. SAE x 5/16" M. SAE. R410a, R32.
UR3- 4 6	1/4" F. SAE x 3/8" M. SAE. R410a, R32.
UR3- 4 8	1/4" F. SAE x 1/2" M. SAE. R410a, R32.
UR3- 5 4	5/16" F. SAE x 1/4" M. SAE. R410a, R32.
UR3- 5 6	5/16" F. SAE x 3/8" M. SAE. R410a, R32.
UR3- 5 8	5/16" F. SAE x 1/2" M. SAE. R410a, R32.
UR3- 6 4	3/8" F. SAE x 1/4" M. SAE. R410a, R32.
UR3- 6 5	3/8" F. SAE x 5/16" M. SAE. R410a, R32.
UR3- 6 8	3/8" F. SAE x 1/2" M. SAE. R410a, R32.
UR3- 610	3/8" F. SAE x 5/8" M. SAE. R410a, R32.
UR3- 8 4	1/2" F. SAE x 1/4" M. SAE. R410a, R32.
UR3- 8 6	1/2" F. SAE x 3/8" M. SAE. R410a, R32.
UR3- 810	1/2" F. SAE x 5/8" M. SAE. R410a, R32.
UR3- 812	1/2" F. SAE x 3/4" M. SAE. R410a, R32.
UR3-10 8	5/8" F. SAE x 1/2" M. SAE. R410a, R32.

UR3-10 8	5/8" F. SAE x 1/2" M. SAE. R-410a, R32.
UR3-1012	5/8" F. SAE x 3/4" M. SAE. R-410a, R32.
UR3-12 8 407c	3/4" F. SAE x 1/2" M. SAE.
UR3-1210 407c	3/4" F. SAE x 5/8" M. SAE.

### Male SAE Flare x ODS Female Solder ADAPTER



US3- 5 5

Model	Description
US3- 4 4	Adapter 1/4" Male SAE Flare x 1/4" OD Tubing Solder.
US3- 4 5	1/4" M. SAE x 5/16" ( 8 mm.) ODS.
US3- 4 6	1/4" M. SAE x 3/8" ODS.
US3- 5 4	5/16" M. SAE x 1/4" ODS.
US3- 5 5	5/16" M. SAE x 5/16" ( 8 mm.) ODS.
US3- 5 6	5/16" M. SAE x 3/8" ODS.
US3- 6 4	3/8" M. SAE x 1/4" ODS.
US3- 6 5	3/8" M. SAE x 5/16" ( 8 mm.) ODS.
US3- 6 6	3/8" M. SAE x 3/8" ODS.
US3- 6 8	3/8" M. SAE x 1/2" ODS.
US3- 610	3/8" M. SAE x 5/8" (16 mm.) ODS.
US3- 8 5	1/2" M. SAE x 5/16" ( 8 mm.) ODS.
US3- 8 6	1/2" M. SAE x 3/8" ODS .
US3- 8 8	1/2" M. SAE x 1/2" ODS.
US3- 810	1/2" M. SAE x 5/8" (16 mm.) ODS.
US3-10 6	5/8" M. SAE x 3/8" ODS.
US3-10 8	5/8" M. SAE x 1/2" ODS.
US3-1010	5/8" M. SAE x 5/8" (16 mm.) ODS.
US3-1012	5/8" M. SAE x 3/4" ODS.
US3-1014	5/8" M. SAE x 7/8" ODSr.
US3-12 8	3/4" M. SAE x 1/2" ODS.
US3-1210	3/4" M. SAE x 5/8" (16 mm.) ODS.
US3-1212	3/4" M. SAE x 3/4" ODS.
US3-1214	3/4" M. SAE x 7/8" ODS.
US3-1414	7/8" M. SAE x 7/8" ODS.
US3- 4 6MM	Metric 1/4" M. SAE x 6 mm. OD Tubing Solder.
US3- 410MM	1/4" (7/16" 20UNF) M. SAE x 10 mm. ODS.
US3- 5 6MM	5/16" ( 1/2" 20UNF) M. SAE x 6 mm. ODS.
US3- 510MM	5/16" ( 1/2" 20UNF) M. SAE x 10 mm. ODS.
US3- 6 6MM	3/8" ( 5/8" 18UNF) M. SAE x 6 mm. ODS.
US3- 610MM	3/8" ( 5/8" 18UNF) M. SAE x 10 mm. ODS.
US3- 612MM	3/8" ( 5/8" 18UNF) M. SAE x 12 mm. ODS.
US3- 810MM	1/2" ( 3/4" 16UNF) M. SAE x 10 mm. ODS.
US3- 812MM	1/2" ( 3/4" 16UNF) M. SAE x 12 mm. ODS.
US3- 814MM	1/2" ( 3/4" 16UNF) M. SAE x 14 mm. ODS.
US3-1014MM	5/8" ( 7/8" 14UNF) M. SAE x 14 mm. ODS.
US3-1018MM	5/8" ( 7/8" 14UNF) M. SAE x 18 mm. ODS.
US3-1218MM	3/4" (1-1/16" 14UNF) M. SAE x 18 mm. ODS.
US3-1222MM	3/4" (1-1/16" 14UNF) M. SAE x 22 mm. ODS.

### Female SAE Flare w/Long Tan Copper Gasket x Female SAE Flare w/Long Tan Copper Gasket - CONNECTOR



U4- 4

Model	Description
U4- 4	Connector (2) 1/4" (7/16" 20UNF) Female SAE Flare with Long Tan Copper Gasket. R410a, R32.
U4- 5	(2) 5/16" ( 1/2" 20UNF) F. SAE. R410a, R32.
U4- 6	(2) 3/8" ( 5/8" 18UNF) F. SAE. R410a, R32.
U4- 8	(2) 1/2" ( 3/4" 16UNF) F. SAE. R410a, R32.
U4-10	(2) 5/8" ( 7/8" 14UNF) F. SAE. R410a, R32.
U4-12	(2) 3/4" (1-1/16" 14UNF) F. SAE. R410a, R32.

### (2) Female SAE Flare Swivel Nut with Long Tan Copper Gasket - CONNECTOR



US4- 4

Model	Description
US4- 4	Connector (2) 1/4" (7/16" 20UNF) Female SAE Flare Swivel Nut with Long Tan Copper Gasket. R410a, R32.
US4- 5	(2) 5/16" (1/2" 20UNF) F. SAE. R410a, R32.
US4- 6	(2) 3/8" (5/8" 18UNF) F. SAE. R410a, R32.
US4- 8	(2) 1/2" (3/4" 16UNF) F. SAE. R410a, R32.
US4-10	(2) 5/8" (7/8" 14UNF) F. SAE. R410a, R32.
US4-12	(2) 3/4" (1-1/16" 14UNF) F. SAE. R410a, R32.

### (2) Female SAE Flare Swivel Nut with Long Tan Copper Gasket REDUCING CONNECTOR



URS4- 5 4

Model	Description
URS4- 5 4	Reducing Connector 5/16" (1/2" 20UNF) Female SAE Flare Swivel Nut with Long Tan Copper Gasket x 1/4" (7/16" 20UNF) Female SAE Flare Swivel Nut with Long Tan Copper Gasket. R410a, R32.
URS4- 6 4	3/8" F. SAE x 1/4" F. SAE. R410a, R32.
URS4- 8 6	1/2" F. SAE x 3/8" F. SAE. R410a, R32.
URS4-10 8	5/8" F. SAE x 1/2" F. SAE. R410a, R32.
URS4-1210	3/4" F. SAE x 5/8" F. SAE. R410a, R32.

### Female SAE Flare with Long Tan Copper Gasket x Male Pipe Thread MPT ADAPTER



U5- 5A

Model	Description
U5- 4A	Adapter 1/4" Female SAE Flare with Long Tan Copper Gasket x 1/8" Male NPT Pipe Thread. R410a, R32.
U5- 4B	1/4" F. SAE x 1/4" M. NPT. R410a, R32.
U5- 4C	1/4" F. SAE x 3/8" M. NPT. R410a, R32.
U5- 5A	5/16" F. SAE x 1/8" M. NPT. R410a, R32.
U5- 5B	5/16" F. SAE x 1/4" M. NPT. R410a, R32.
U5- 5C	5/16" F. SAE x 3/8" M. NPT. R410a, R32.
U5- 6B	3/8" F. SAE x 1/4" M. NPT. R410a, R32.
U5- 6C	3/8" F. SAE x 3/8" M. NPT. R410a, R32.
U5- 6D	3/8" F. SAE x 1/2" M. NPT. R410a, R32.
U5- 8C	1/2" F. SAE x 3/8" M. NPT. R410a, R32.
U5- 8D	1/2" F. SAE x 1/2" M. NPT. R410a, R32.

### Female SAE Flare Swivel Nut w/Long Tan Copper Gasket x Copper Tube Extension ODS solder ADAPTER



US5- 6 6

Model	Description
US5- 4 4	Adapter 1/4" (7/16" 20UNF) Female SAE Flare Swivel Nut w/Long Tan Copper Gasket x 1/4" ODS R410a, R32
US5- 6 6	3/8" (5/8" 18UNF) F. SAE x 3/8" ODS. R410a, R32.
US5- 8 8	1/2" (3/4" 16UNF) F. SAE x 1/2" ODS. R410a, R32.
US5-1010	5/8" (7/8" 14UNF) F. SAE x 5/8" ODS. R410a, R32.
US5-1212	3/4" (1-1/16" 14UNF) F. SAE x 3/4" ODS R410a, R32

### Female SAE Flare x ODS Female Solder - ADAPTER



US6- 5 5

Model	Description
US6- 4 4	Adapter 1/4" (7/16" 20UNF) Female SAE Flare w/Long Tan Copper Gasket x 1/4" OD Solder. R410a, R32.
US6- 5 5	5/16" F. SAE x 5/16" (8 mm.) ODS. R410a, R32.
US6- 6 6	3/8" (5/8" 18UNF) F. SAE x 3/8" ODS. R410a, R32.
US6- 8 8	1/2" (3/4" 16UNF) F. SAE x 1/2" ODS. R410a, R32.
US6-1010	5/8" (7/8" 14UNF) F. SAE x 5/8" ODS. R410a, R32.

US6- 42,75MM	1/4" (7/16" 20UNF) F. SAE with Long Tan Copper Gasket x Capillary 2,75 mm. OD Solder.
US6- 52,75MM	5/16" (1/2" 20UNF) F. SAE with Long Tan Copper Gasket x Capillary 2,75 mm. ODS. R410a, R32.
US6- 4 6MM	1/4" (7/16" 20UNF) F. SAE x 6 mm. ODS.
US6- 610MM	3/8" ( 5/8" 18UNF) F. SAE x 10 mm. ODS.
US6- 812MM	1/2" ( 3/4" 16UNF) F. SAE x 12 mm. ODS.
US6-1016MM	5/8" ( 7/8" 14UNF) F. SAE x 16 mm. ODS.

### Female SAE Flare with Long Tan Copper Gasket x Female Pipe Thread FPT ADAPTER



U6- 6B

Model	Description
U6- 4A	Adapter 1/4" Female SAE Flare with Long Tan Copper Gasket x 1/8" Female NPT Pipe Thread. R410a, R32.
U6- 4B	1/4" F. SAE x 1/4" F. NPT. R410a, R32.
U6- 4C	1/4" F. SAE x 3/8" F. NPT. R410a, R32.
U6- 5A	5/16" F. SAE x 1/8" F. NPT. R410a, R32.
U6- 5B	5/16" F. SAE x 1/4" F. NPT. R410a, R32.
U6- 5C	5/16" F. SAE x 3/8" F. NPT. R410a, R32.
U6- 6A	3/8" F. SAE x 1/8" F. NPT. R410a, R32.
U6- 6B	3/8" F. SAE x 1/4" F. NPT. R410a, R32.
U6- 6C	3/8" F. SAE x 3/8" F. NPT. R410a, R32.
U6- 8B	1/2" F. SAE x 1/4" F. NPT. R410a, R32.
U6- 8C	1/2" F. SAE x 3/8" F. NPT. R410a, R32.

### Female SAE Flare with Long Tan Copper Gasket x Male SAE Flare



U3- 5

Model	Description
U3- 4	Extension 1/4" Female SAE with Long Tan Copper Gasket x 1/4" Male SAE. R410a, R32.
U3- 5	5/16" F. SAE x 5/16" M. SAE. R410a, R32.
U3- 6	3/8" F. SAE x 3/8" M. SAE. R410a, R32.
U3- 8 407c	1/2" F. SAE x 1/2" M. SAE.
U3- 8	1/2" F. SAE x 1/2" M. SAE. R410a, R32.
U3-10 407c	5/8" F. SAE x 5/8" M. SAE.
U3-10	5/8" F. SAE x 5/8" M. SAE. R410a, R32.



### Male SAE Flare x Male NPT Pipe Thread EXTRA LONG ADAPTER



UX1- 4B

Model	Description
UX1- 4A	Extra Long Adapter 1/4" Male SAE Flare x 1/8" Male NPT Pipe Thread.
UX1- 4B	1/4" M. SAE x 1/4" M. NPT.
UX1- 4C	1/4" M. SAE x 3/8" M. NPT.
UX1- 5A	5/16" M. SAE x 1/8" M. NPT.
UX1- 5B	5/16" M. SAE x 1/4" M. NPT.
UX1- 5C	5/16" M. SAE x 3/8" M. NPT.

### Male SAE Flare x Male SAE Flare EXTRA LONG UNION



UX2- 5

Model	Description
UX2- 4	Extra Long Union (2) 1/4" (7/16" 20UNF) M. SAE Flare.
UX2- 5	5/16" M. SAE x 5/16" M. SAE.

### Female SAE Swivel Nut with Long Tan Copper Gasket x Male NPT Pipe Thread ADAPTERS



US4-12E

Model	Description
US4- 4A	Adapter 1/4" (7/16" 20UNF) Female SAE Swivel Nut with Long Tan Copper Gasket x 1/8" Male NPT Pipe Thread. R410a, R 32.
US4- 4B	1/4" F. SAE x 1/4" M. NPT. R410a, R32.
US4- 4C	1/4" F. SAE x 3/8" M. NPT. R410a, R32.
US4- 5A	5/16" F. SAE x 1/8" M. NPT. R410a, R32.
US4- 5B	5/16" F. SAE x 1/4" M. NPT. R410a, R32.
US4- 5C	5/16" F. SAE x 3/8" M. NPT. R410a, R32.
US4- 6B	3/8" F. SAE x 1/4" M. NPT. R410a, R32.
US4- 6C	3/8" F. SAE x 3/8" M. NPT. R410a, R32.
US4- 6D	3/8" F. SAE x 1/2" M. NPT. R410a, R32.
US4- 8C	1/2" F. SAE x 3/8" M. NPT. R410a, R32.
US4- 8D	1/2" F. SAE x 1/2" M. NPT. R410a, R32.
US4- 8E	1/2" F. SAE x 3/4" M. NPT. R410a, R32.
US4-10D	5/8" F. SAE x 1/2" M. NPT. R410a, R32.
US4-10E	5/8" F. SAE x 3/4" M. NPT. R410a, R32.
US4-12D	3/4" F. SAE x 1/2" M. NPT. R410a, R32.
US4-12E	3/4" F. SAE x 3/4" M. NPT. R410a, R32.

### Female SAE - HEX LOCK NUT



HLN- 4

Model	Description
HLN- 4	Hex Lock Nut 1/4" (7/16" 20UNF) Female SAE.
HLN- 5	5/16" (1/2" 20UNF) F. SAE.
HLN- 6	3/8" (5/8" 18UNF) F. SAE.
HLN- 8	1/2" (3/4" 16UNF) F. SAE.
HLN-10	5/8" (7/8" 14UNF) F. SAE.

### FUSIBLE PLUGS

Fusible plugs are devices that function with the melting of the fusible alloy, of easy installation, and maximum safety. It's purpose is to act as a safety device allowing the safe controlled release of pressure in case of overheating (the lead core melts away).

Fusible plugs are formed with a tapered hole, this hole runs throughout the entire length of the plug, it is then secured with a mix of eutectic alloys located so that it is not disturbed or under any stress when the plug is tightened.

Thanks to an appositely internal improved contact surface the mechanical strength such as creep properties of the alloy is very high, assuring a proper and effective sealing relationship between the body and the eutectic alloy.

- Used for Fire Protection;
- Used in applications where the Pressure does not exceed 500 Psig (34 Bar);
- Compact brass body;
- Corrosion resistant;
- Exclusive internal extended contact surface;
- High Mechanical Strength (creep properties of the alloy);
- CE Compliant for European Market.

**NOTE :** Fusible plugs do not protect in case of overpressure due to the improper refrigerant charging methods. Fusible plugs are NOT to be used with Ammonia R-717 or in an Ammonia atmosphere.



FP-B-168

Model	Description
<b>Temperature 168° F. (75° C.)</b>	
FP-A-168	Fusible Plug 1/8" Male Pipe Thread M. NPT.
FP-B-168	1/4" M. NPT.
FP-C-168	3/8" M. NPT.
<b>Temperature 210° F. ( 99° C.)</b>	
FP-A-210	1/8" M. NPT.
FP-B-210	1/4" M. NPT.
FP-C-210	3/8" M. NPT.
<b>Temperature 283° F. (140° C.)</b>	
FP-A-283	1/8" M. NPT.
FP-B-283	1/4" M. NPT.
FP-C-283	3/8" M. NPT.

<b>Temperature 168° F. ( 75° C.)</b>	
FP-AGAS-168	Fusible Plug 1/8" Male GAS Thread.
FP-BGAS-168	1/4" MGT.
FP-CGAS-168	3/8" MGT.
<b>Temperature 210° F. ( 99° C.)</b>	
FP-AGAS-210	1/8" MGT.
FP-BGAS-210	1/4" MGT.
FP-CGAS-210	3/8" MGT.
<b>Temperature 283° F. (140° C.)</b>	
FP-AGAS-283	1/8" MGT.
FP-BGAS-283	1/4" MGT.
FP-CGAS-283	3/8" MGT.

<b>Temperature 76° C. (168° F.)</b>	
FP-AGAS-168	Fusible Plug 1/8" Male GAS Thread.
FP-BGAS-168	1/4" M. G.
FP-CGAS-168	3/8" M. G.
<b>Temperature 99° C. (210° F.)</b>	
FP-AGAS-210	1/8" M. G.
FP-BGAS-210	1/4" M. G.
FP-CGAS-210	3/8" M. G.
<b>Temperature 140° C. (283° F.)</b>	
FP-AGAS-283	1/8" M. G.
FP-BGAS-283	1/4" M. G.
FP-CGAS-283	3/8" M. G.

### FUSIBLE PLUGS

Fusible plugs are devices that function with the melting of the fusible alloy, of easy installation, and maximum safety. It's purpose is to act as a safety device allowing the safe controlled release of pressure in case of overheating (the lead core melts away).

Fusible plugs are formed with a tapered hole, this hole runs throughout the entire length of the plug, it is then secured with a mix of eutectic alloys located so that it is not disturbed or under any stress when the plug is tightened. Thanks to an appositely internal improved contact surface the mechanical strength such as creep properties of the alloy is very high, assuring a proper and effective sealing relationship between the body and the eutectic alloy.

**NOTE :** Fusible plugs do not protect in case of overpressure due to the improper refrigerant charging methods. Fusible plugs are NOT to be used with Ammonia R-717 or in an Ammonia atmosphere.

### FUSIBLE PLUGS - Male NPT National Pipe Thread



FP-C-283

Model	Description
<b>Temperature 76° C. (168° F.)</b>	
FP-A-168	Fusible Plug 1/8" Male NPT National Pipe Thread.
FP-B-168	1/4" M. NPT.
FP-C-168	3/8" M. NPT.
<b>Temperature 99° C. (210° F.)</b>	
FP-A-210	1/8" M. NPT.
FP-B-210	1/4" M. NPT.
FP-C-210	3/8" M. NPT.
<b>Temperature 140° C. (283° F.)</b>	
FP-A-283	1/8" M. NPT.
FP-B-283	1/4" M. NPT.
FP-C-283	3/8" M. NPT.

### FUSIBLE PLUGS - Male SAE Flare x Male NPT National Pipe Thread



FU-4B-283

<b>Temperature 76° C. (168° F.)</b>	
FU-4B-168	Fusible plug 1/4" Male SAE Flare x 1/4" Male NPT National Pipe Thread.
FU-4C-168	1/4" M. SAE x 3/8" M. NPT.
FU-6C-168	3/8" M. SAE x 3/8" M. NPT.
<b>Temperature 99° C. (210° F.)</b>	
FU-4B-210	1/4" M. SAE x 1/4" M. NPT.
FU-4C-210	1/4" M. SAE x 3/8" M. NPT.
FU-6C-210	3/8" M. SAE x 3/8" M. NPT.
<b>Temperature 140° C. (283° F.)</b>	
FU-4B-283	1/4" M. SAE x 1/4" M. NPT.
FU-4C-283	1/4" M. SAE x 3/8" M. NPT.
FU-6C-283	3/8" M. SAE x 3/8" M. NPT.

### COPPER FLARE BONNETS / GASKETS / LONG TAN COPPER GASKETS

**B1** Copper Flare Bonnets are used in order to protect from refrigerant or nitrogen charge leaks the ports connection of Refrigeration Equipments, Condensing Units, Fan-coils, Condensers, Evaporators...

**B2** Copper Flare Gaskets are used in all brass to brass connections.

**B3** Long Tan Copper Gasket remain in perfect position even in horizontal connections or vertical towards down connections. Also used in STEK high leak proof fittings, SFF Self Flare Fittings, Adapters, Connectors...



B1- 4



B2- 4



B3- 4

Model	Description
B1- 3	Copper Flare <b>Bonnet</b> for Ø <b>3/16"</b> O.D. tubing. Replace after every application.
B1- 4	<b>1/4"</b> ( <b>6,35 mm.</b> ) OD tubing.
B1- 5	<b>5/16"</b> ( <b>8,00 mm.</b> ) OD tubing
B1- 6	<b>3/8"</b> ( <b>9,52 mm.</b> ) OD tubing.
B1- 8	<b>1/2"</b> ( <b>12,70 mm.</b> ) OD tubing.
B1-10	<b>5/8"</b> ( <b>15,88 mm.</b> ) OD tubing.
B1-12	<b>3/4"</b> ( <b>19,05 mm.</b> ) OD tubing.
B1-14	<b>7/8"</b> ( <b>22,22 mm.</b> ) OD tubing.
B2- 4	Copper Flare Gasket for <b>1/4"</b> (7/16" 20UNF) <b>Female SAE Flare</b> . Replace after every application.
B2- 5	<b>5/16"</b> ( 1/2" 20UNF) <b>F. SAE.</b>
B2- 6	<b>3/8"</b> ( 5/8" 18UNF) <b>F. SAE.</b>
B2- 8	<b>1/2"</b> ( 3/4" 16UNF) <b>F. SAE.</b>
B2-10	<b>5/8"</b> ( 7/8" 14UNF) <b>F. SAE.</b>
B2-12	<b>3/4"</b> (1-1/16" 14UNF) <b>F. SAE.</b>
B2-14	<b>7/8"</b> ( 1-1/4" 12UNF) <b>F. SAE.</b>
B3- 4	Long Tan Copper Gasket for <b>1/4"</b> (7/16" 20UNF) <b>Female SAE Flare</b> . Replace after every application.
B3- 5	<b>5/16"</b> ( 1/2" 20UNF) <b>F. SAE.</b>
B3- 6	<b>3/8"</b> ( 5/8" 18UNF) <b>F. SAE.</b>
B3- 8	<b>1/2"</b> ( 3/4" 16UNF) <b>F. SAE.</b>
B3-10	<b>5/8"</b> ( 7/8" 14UNF) <b>F. SAE.</b>
B3-12	<b>3/4"</b> (1-1/16" 14UNF) <b>F. SAE.</b>
B3-14	<b>7/8"</b> ( 1-1/4" 12UNF) <b>F. SAE.</b>

Air Conditioning, Refrigeration Production Brass fittings, Air Conditioning SAE Flare Fittings, Adaptor, Adapters, Unions, Connectors, Reducing, Brass fitting for Refrigerants CFC, HCFC, HFC, HFO, 3/16" SAE, 1/4" SAE, 5/16" SAE Left Hand Thread for R-32, R32, 3/8", SAE, 7/16" 20UNF, 1/2" 20UNF, 5/8" SAE, 3/4" SAE, 7/8" SAE, 5/16" 24UNF, 3/8" 24UNF, 7/16" 20UNF, 1/2" 20UNF, 5/8" 18UNF, 11/16" 16 UNF, 3/4" 16UNF, 7/8" 14UNF, 1-1/16" 14UNF, 1-1/4" 12UNF, brass flare fittings 45° degree air conditioning, refrigeration production brass fittings and adapters NPT, MPT, FPT thread for R1234ze, R-1234ze, R-32, R32, R404a, R-404a, R-507, R507, R-407c, R407c, R407f, R-407f, r-410a, r410a, r-134a, r134a, Air Conditioning, A/C, Refrigerations, Brass fittings for AC&R with Long Tan Copper Gasket Itcg

Raccords laiton pour fluide refrigerants Erous, à souder, réduction, unions mâle flare, femelle flare, Briggs NPTFE flare, NPTFI flare, Coudes 90° laiton égaut Flare, coniques briggs NPTFE Flare, Tés laiton égaut Flare, Tés laiton réduit Flare, Tés laiton mâle femelle Flare, Croix laiton Flare, Tés laiton coniques mâles NPTFE Flare, Bouchons laiton mâles, Bouchons laiton femelles, Raccord laiton mâle Flare / femelle souder, Capsules cuivres obturatrices, Rondelle, Joints cuivres intercalaires 7/16" 20UNF, 1/2" 20UNF, 5/8" SAE, 3/4" SAE, 7/8" SAE, 5/16" 24UNF, 3/8" 24UNF, 7/16" 20UNF, 1/2" 20UNF, 5/8" 18UNF, 11/16" 16 UNF, 3/4" 16UNF, 7/8" 14UNF, 1-1/16" 14UNF, 1-1/4" 12UNF, Raccords laiton, Briggs NPT, R1234ze, R-1234ze, R-32, R32, R404a, R-404a, R-507, R507, R-407c, R407c, R407f, R-407f, r-410a, r410a, r-134a, r134a, CFC, HCFC, HFC, HFO Climatiseur, Climatique, Froid, Climatisation

Refrigeración, Aire Acondicionado, Accesorios de Latón a Roscar, Unión Macho Rosca SAE, Tuerca Abocardada Rosca SAE, Tuerca Reducida Abocardada Rosca SAE, Reducciones Macho Rosca SAE gas, Reducciones Macho / Hembra Rosca SAE gas, Tapon Macho Rosca SAE, Tapon Hembra Rosca SAE, Reducción Hembra Rosca SAE, Union Hembra Rosca SAE, Codo 90° macho rosca SAE gas, Codo 90° reducido macho rosca, Tes macho rosca, Tes macho rosca, Refrigeration, Aire Acondicionado 7/16" 20UNF, 1/2" 20UNF, 5/8" SAE, 3/4" SAE, 7/8" SAE, 5/16" 24UNF, 3/8" 24UNF, 7/16" 20UNF, 1/2" 20UNF, 5/8" 18UNF, 11/16" 16 UNF, 3/4" 16UNF, 7/8" 14UNF, 1-1/16" 14UNF, 1-1/4" 12UNF, Accesorios de Latón a Roscar SAE Refrigeration, Aire Acondicionado CFC, HCFC, HFC gas R1234ze, R-1234ze, R-32, R32, R404a, R-404a, R-507, R507, R-407c, R407c, R407f, R-407f, r-410a, r410a, r-134a, r134a, Refrigeration, Aire Acondicionado

Komponenten Kältetechnik, Komponenten Kälte-Klima, Werkzeuge Kupferkappen, Kegelstumpflartige Kupferdichtungen, Bördelmutter, Rohre Zellen, Blindstutzen Bördel, Reduzierte Bördelmutter, R1234ze, R-1234ze, R-32, R32, R404a, R-404a, R-507, R507, R-407c, R407c, R407f, R-407f, r-410a, r410a, r-134a, r134a, Doppelmutter, Verbinder, Reduzierverbinder, SAE Bördel 7/16" 20UNF, 1/2" 20UNF, 5/8" SAE, 3/4" SAE, 7/8" SAE, 5/16" 24UNF, 3/8" 24UNF, 7/16" 20UNF, 1/2" 20UNF, 5/8" 18UNF, 11/16" 16 UNF, 3/4" 16UNF, 7/8" 14UNF, 1-1/16" 14UNF, 1-1/4" 12UNF, SAE, NPT Verbinder, Reduzierverbinder, R-1234ze, R1234ze, Kälte-Klima Werkzeuge, Komponenten HFKW, HFGKW, FCKW, Reduzierstück, Aussengewinde, Umkehrverlängerungsstücke, R-32, R32 Schweißverbindungen, Winkelstücke SAE Bördel, NPT reduziert, Reduzierte T-Stück Bördel, Kreuzstück Bördel, SAE Flare Verschlüsse